

# Guide to Frigoboat "MS" line of stainless steel refrigerated cabinets

## CABINET TYPES



### **COMBO - "C"**

Refrigerator cabinet with small freezer compartment



### **ALL REFRIGERATOR - "R"**

All refrigerator cabinet with hidden evaporator



### **ALL FREEZER - "FZ"**

All freezer cabinet with hidden evaporator

## CABINET SIZES

### **MS 115**

Exterior dimensions  
19"W x 19"D x 33"H

Standard under-counter height, narrow width.

Suitable for stand-alone or side-by-side

Available in "C", "R" and "FZ"

### **MS 130**

Exterior dimensions  
21"W x 21" x 29"H

Less than standard under-counter height.

Suitable for stand-alone, stacking, or side-by-side.

Available in "C", "R", and "FZ"

### **MS 160**

Exterior Dimensions  
21.5"W x 22"D x 33"H

Standard under-counter height.

Suitable for stand-alone, stacking, or side-by side

Available in "C", "R", and "FZ"

### **MS 90**

Exterior dimensions  
21.5W x 22"D x 27"H

Low height for stacking or under counter with height restrictions

Available in "FZ" only

### **MS 180**

Exterior dimensions  
21.5"W x 22"D x 39.5"H

Tall height for stacking or stand-alone installations

Available in "R" only



See over for accessories

# Accessories

## Drawer Kits

Replaces standard shelving in the following cabinets:

MS 90 FZ - MS 160 FZ  
MS 160R - MS 180R

Two drawer sizes; Small and Large



## Stacking Kits

To facilitate stacking two cabinets of the same width.

Allows for installation of drain in refrigerator cabinet when stacked on top of freezer.

Spacer panel can be plain or house two Carel thermostat/thermometers

Available for: MS 90FZ - MS 160FZ  
MS 160R - MS 180R



## Top Panel Kits

For mounting of Top Panel.

Top Panel can be plain or house two Carel thermostat/thermometers

Available for: MS 90FZ - MS160FZ  
MS 160R - MS 180R



## Door Panel Kits

To facilitate mounting customer-supplied door panel. Maximum panel thickness 1/8"

Available for all models on request.

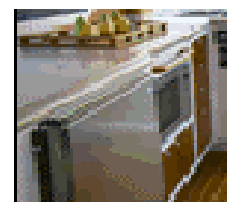


## Trim Kits

For mounting cabinets flush in facia.

Comprises of four-piece flange that mounts on cabinet. Provides 1" flange.

Available for all models



Pearson True North 38